



# LCD Control Panel

Quick Start Guide

# Legal Information

## About this Document

- This Document includes instructions for using and managing the Product. Pictures, charts, images and all other information hereinafter are for description and explanation only.
- The information contained in the Document is subject to change, without notice, due to firmware updates or other reasons. Please find the latest version of the Document at the Hikvision website (<https://www.hikvision.com>). Unless otherwise agreed, Hangzhou Hikvision Digital Technology Co., Ltd. or its affiliates (hereinafter referred to as "Hikvision") makes no warranties, express or implied.
- Please use the Document with the guidance and assistance of professionals trained in supporting the Product.

## About this Product

This product can only enjoy the after-sales service support in the country or region where the purchase is made.

## Acknowledgment of Intellectual Property Rights

- Hikvision owns the copyrights and/or patents related to the technology embodied in the Products described in this Document, which may include licenses obtained from third parties.
- Any part of the Document, including text, pictures, graphics, etc., belongs to Hikvision. No part of this Document may be excerpted, copied, translated, or modified in whole or in part by any means without written permission.
- **HIKVISION** and other Hikvision's trademarks and logos are the properties of Hikvision in various jurisdictions.
- Other trademarks and logos mentioned are the properties of their respective owners.

## LEGAL DISCLAIMER

- TO THE MAXIMUM EXTENT PERMITTED BY APPLICABLE LAW, THIS DOCUMENT AND THE PRODUCT DESCRIBED, WITH ITS HARDWARE, SOFTWARE AND FIRMWARE, ARE PROVIDED "AS IS" AND "WITH ALL FAULTS AND ERRORS". HIKVISION MAKES NO WARRANTIES, EXPRESS OR IMPLIED, INCLUDING WITHOUT LIMITATION, MERCHANTABILITY, SATISFACTORY QUALITY, OR FITNESS FOR A PARTICULAR PURPOSE. THE USE OF THE PRODUCT BY YOU IS AT YOUR OWN RISK. IN NO EVENT WILL HIKVISION BE LIABLE TO YOU FOR ANY SPECIAL, CONSEQUENTIAL, INCIDENTAL, OR INDIRECT DAMAGES, INCLUDING, AMONG OTHERS, DAMAGES FOR LOSS OF BUSINESS PROFITS, BUSINESS INTERRUPTION, OR LOSS OF DATA, CORRUPTION OF SYSTEMS, OR LOSS OF DOCUMENTATION, WHETHER BASED ON BREACH OF CONTRACT, TORT (INCLUDING NEGLIGENCE), PRODUCT LIABILITY, OR OTHERWISE, IN CONNECTION WITH THE USE OF THE PRODUCT, EVEN IF HIKVISION HAS BEEN ADVISED OF THE POSSIBILITY OF SUCH DAMAGES OR LOSS.
- YOU ACKNOWLEDGE THAT THE NATURE OF THE INTERNET PROVIDES FOR INHERENT SECURITY RISKS, AND HIKVISION SHALL NOT TAKE ANY RESPONSIBILITIES FOR ABNORMAL OPERATION, PRIVACY LEAKAGE OR OTHER DAMAGES RESULTING FROM CYBER-ATTACK, HACKER ATTACK, VIRUS INFECTION, OR OTHER INTERNET SECURITY RISKS; HOWEVER, HIKVISION WILL PROVIDE TIMELY TECHNICAL SUPPORT IF REQUIRED.

- YOU AGREE TO USE THIS PRODUCT IN COMPLIANCE WITH ALL APPLICABLE LAWS, AND YOU ARE SOLELY RESPONSIBLE FOR ENSURING THAT YOUR USE CONFORMS TO THE APPLICABLE LAW. ESPECIALLY, YOU ARE RESPONSIBLE, FOR USING THIS PRODUCT IN A MANNER THAT DOES NOT INFRINGE ON THE RIGHTS OF THIRD PARTIES, INCLUDING WITHOUT LIMITATION, RIGHTS OF PUBLICITY, INTELLECTUAL PROPERTY RIGHTS, OR DATA PROTECTION AND OTHER PRIVACY RIGHTS. YOU SHALL NOT USE THIS PRODUCT FOR ANY PROHIBITED END-USES, INCLUDING THE DEVELOPMENT OR PRODUCTION OF WEAPONS OF MASS DESTRUCTION, THE DEVELOPMENT OR PRODUCTION OF CHEMICAL OR BIOLOGICAL WEAPONS, ANY ACTIVITIES IN THE CONTEXT RELATED TO ANY NUCLEAR EXPLOSIVE OR UNSAFE NUCLEAR FUEL-CYCLE, OR IN SUPPORT OF HUMAN RIGHTS ABUSES.
- IN THE EVENT OF ANY CONFLICTS BETWEEN THIS DOCUMENT AND THE APPLICABLE LAW, THE LATTER PREVAILS.




**© Hangzhou Hikvision Digital Technology Co., Ltd. All rights reserved.**

## Applicable Models

This manual is applicable to the LCD Control Panel, a quick guide of operations such as screen on/off, brightness adjustment, and scene switching.

## Symbol Conventions

The symbols that may be found in this document are defined as follows.

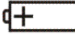
Symbol	Description
 <b>Note</b>	Provides additional information to emphasize or supplement important points of the main text.
 <b>Caution</b>	Indicates a potentially hazardous situation, which if not avoided, could result in equipment damage, data loss, performance degradation, or unexpected results.
 <b>Danger</b>	Indicates a hazard with a high level of risk, which if not avoided, will result in death or serious injury.

## Safety Instructions

### **Danger**

In the use of the product, you must be in strict compliance with the electrical safety regulations of the nation and region.

### **Caution**

- The device shall not be exposed to water dripping or splashing, and no objects filled with liquids, such as vases, shall be placed on the device.
-  identifies the battery holder itself and identifies the positioning of the cells inside the battery holder.
- To prevent injury, this device must be securely attached to the installation surface in accordance with the installation instructions.
- Install the device according to the instructions in Quick Start Guide.
- Model of replaceable dry battery: 1.5V No. 7 alkaline dry battery.
- The installation height should be no more than 2 m.

# Chapter 1 Introduction

The LCD Control Panel (hereafter referred as “the panel”) is designed for seamless integration with Hikvision LCD Display (Unit). Ideal for monitoring centers, command hubs, and exhibition venues, it enables one-touch power control, brightness adjustment, and multi-scene switching, delivering intuitive operation and enhanced visual management efficiency.

## 1.1 Appearance



Figure 1-1 Product Appearance

## 1.2 Panel Button

The panel supports 8 button functions, as described in the table below.

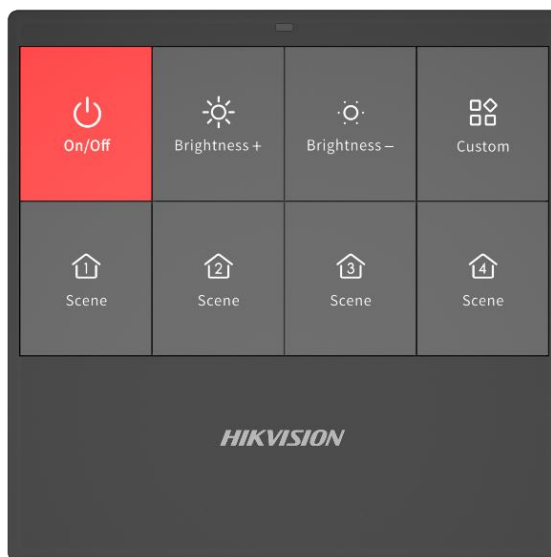


Figure 1-2 Buttons on LCD Control Panel

Table 1-1 Button Descriptions

Button	Function Description
On/Off	Press the button to start up or shut down the display. After pressing, it will respond to the operation as on or off according to the screen status.
Brightness +	Turn up the screen brightness.
Brightness –	Turn down the screen brightness.
Custom	Reserved button, for customizing extra function.
Scene 1/2/3/4	Switch to scene 1/2/3/4.

---

 **Caution**

- The indicator in the control panel will flash once when you press any button.
  - The buttons respond to single pressing. Long pressing or repeatedly pressing are not supported.
- 

### 1.3 Back Cover of the Panel

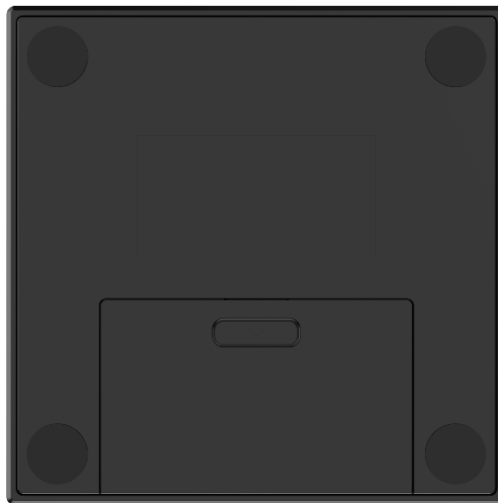


Figure 1-3 Back Cover of the Panel

The back cover of the panel has a full snap-on design for easy battery installation.

## Chapter 2 Basic Functions

### 2.1 Scene Switching

When pressing any scene buttons, the panel will send scene-switching command to the display. After receiving the command, the display will control the decoder and other devices to switch scenes.

#### Note

- If the decoder or other control devices are not linked to any scenes, pressing the scene button on the panel will have no effect.
- Scene switching is only supported when using with decoders or other control devices from Hikvision.

The following example will show how to use the panel to switch from scene 1 to scene 2 via a 6AUD decoder.

#### **Steps**

Step 1 Add 4 scenes on the 6AUD decoder client and save them. The image below shows the page when adding Scene 1 – Default.

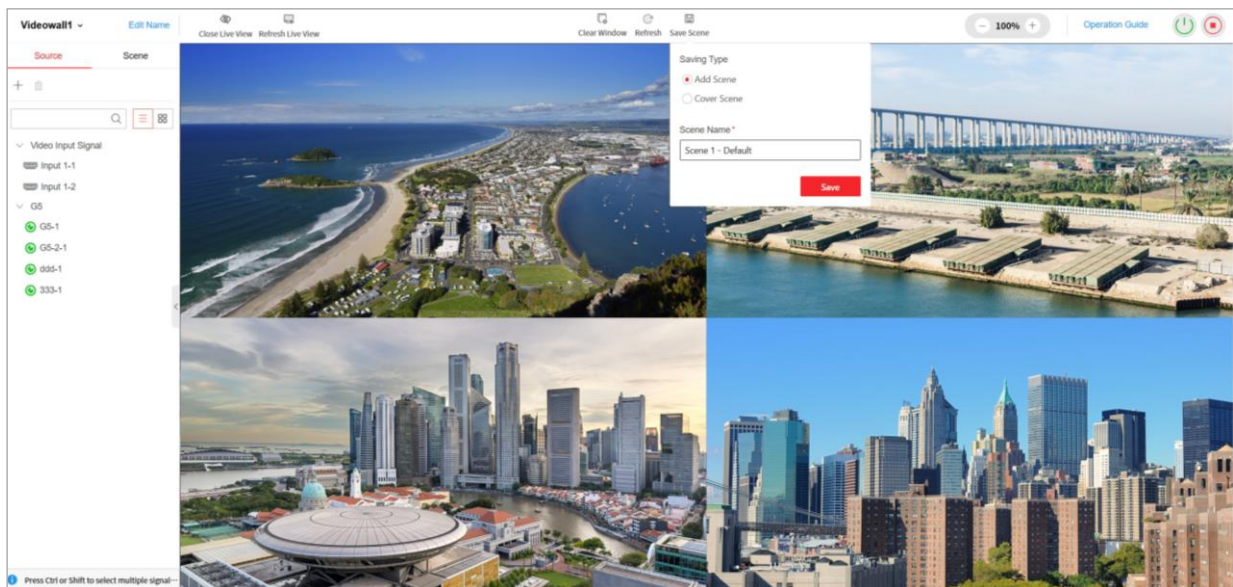


Figure 2-1 Add Scene

Step 2 Press **Scene 1** to call up the Scene 1 – Default on the display.

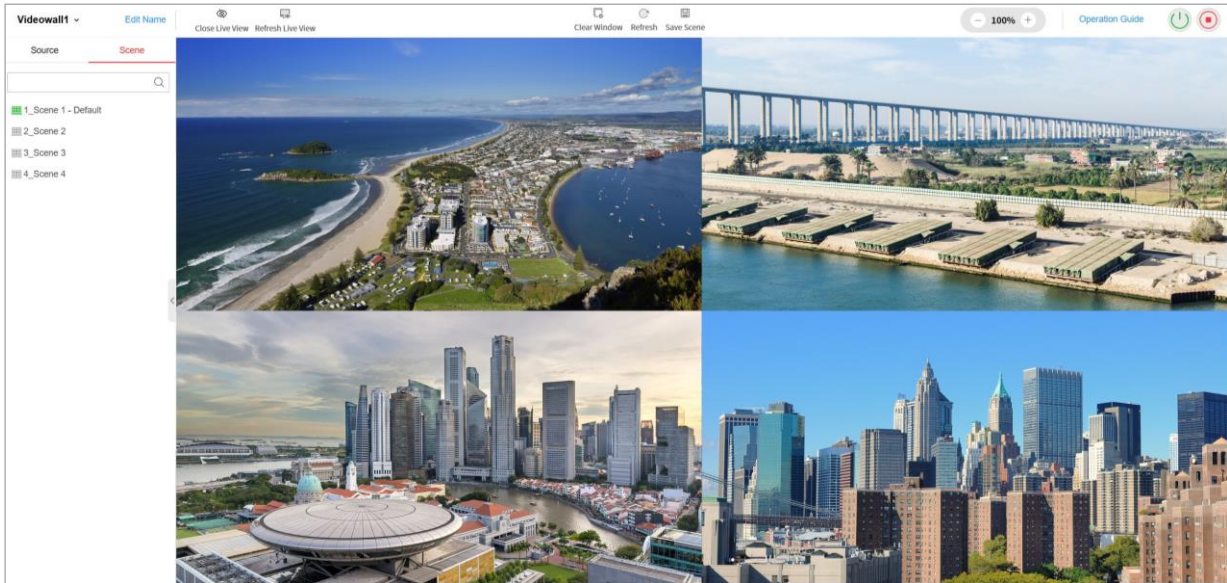


Figure 2-2 Switch to Scene 1

Step 3 Press **Scene 2**, and the display will switch from scene 1 to scene 2.

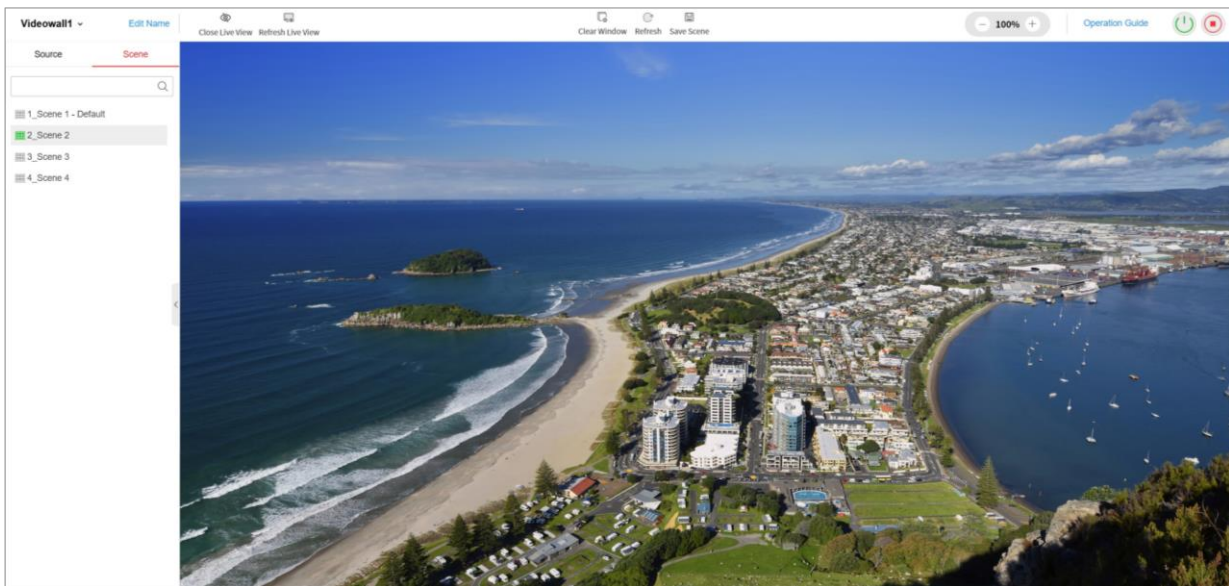


Figure 2-3 Switch to Scene 2

**Note**

The panel can respond to no more than 4 scenes in the display configuration. The scene switching time is less than 3 seconds.

## 2.2 Power Control

When the display stays turned on, after receiving the shutdown command sent by the panel, a prompt will pop up to remind you to confirm whether to shut down. The countdown is 10 seconds.

If you press the On/Off button again within 10 seconds, the display will shut down. Otherwise, the display will stay turned on.



Figure 2-4 Power Control

 **Note**

If the display stays turned off, it will power on after receiving startup command.

## 2.3 Remote Control

When using the panel, you can control the display in 3 directions: left, right, and top. The control angle is from 0° to 70°, and the control distance is 10 m (open space with no obstacles).



See Far, Go Further